

# Hyrule Town - LOZMC

Composed by Mitsuhiro Takano  
Arranged by Nintendude73

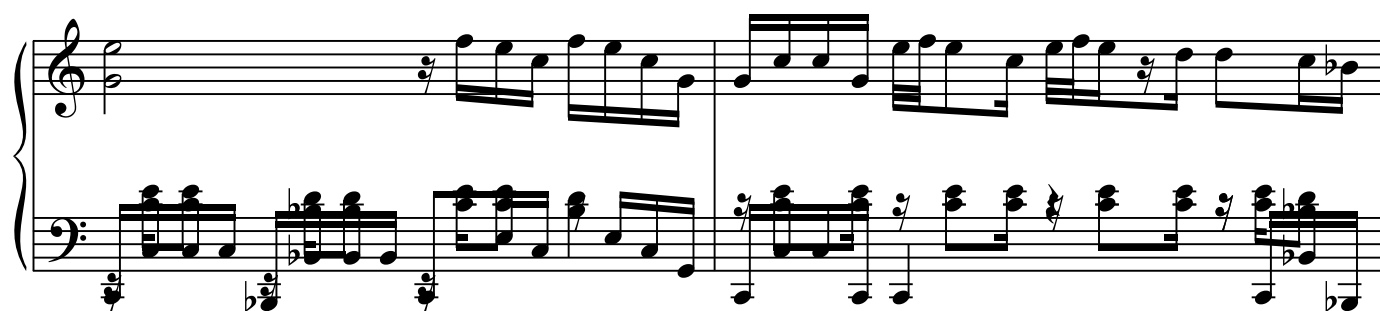
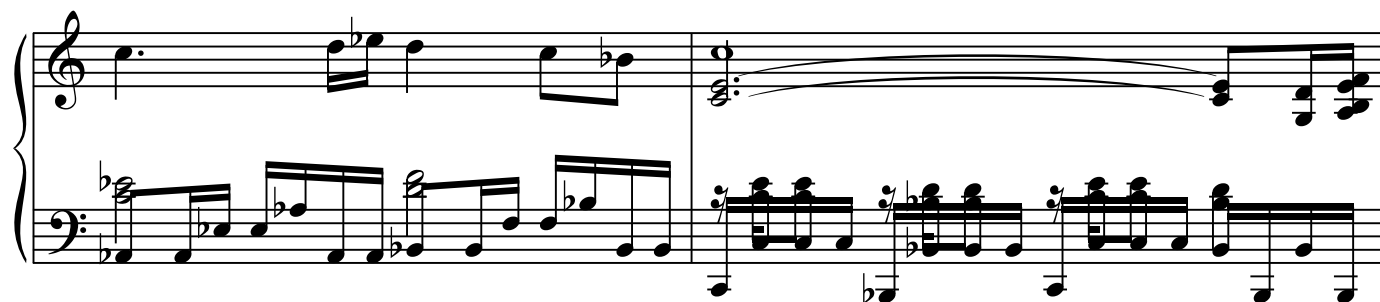
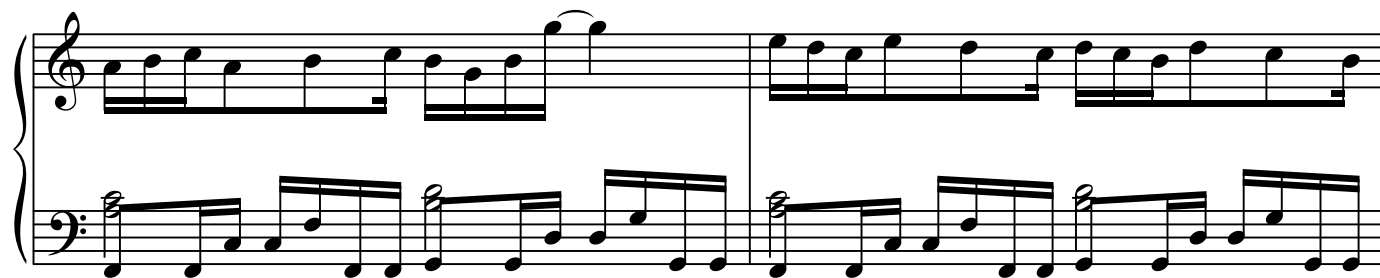
Piano

The first system of the piano arrangement. The right hand (treble clef) begins with a whole note chord, followed by a half note, and then a quarter note leading into a slur over a series of eighth notes. The left hand (bass clef) plays a continuous eighth-note accompaniment throughout the system.

The second system of the piano arrangement. The right hand (treble clef) continues the melody with eighth notes and includes a quarter rest. The left hand (bass clef) maintains the eighth-note accompaniment.

The third system of the piano arrangement. The right hand (treble clef) continues the melody with eighth notes and includes a quarter rest. The left hand (bass clef) maintains the eighth-note accompaniment.

The fourth system of the piano arrangement. The right hand (treble clef) continues the melody with eighth notes. The left hand (bass clef) maintains the eighth-note accompaniment.



Hyrule Town - LOZMC

3

